

# Wacom®

## Cintiq Pro

### Create directly on screen with our most natural pen experience

The Wacom Cintiq Pro 32 and 24 are advanced creative pen displays. Combined with Wacom Pro Pen 2, they offer an experience designed to enhance every creative breakthrough.



reddot design award  
winner 2018



Featured artist: David McLeod

#### A display that looks – and feels – totally natural

The etched glass screen provides a distinct, tactile experience as you draw, mimicking the feel of a pen on paper while reducing unwanted glare and reflections.

The display offers realistic color accuracy of up to 99% Adobe RGB, plus, at 4K resolution, you can see every detail of your creation in pinpoint accuracy.

#### Wacom Pro Pen 2: natural and precise

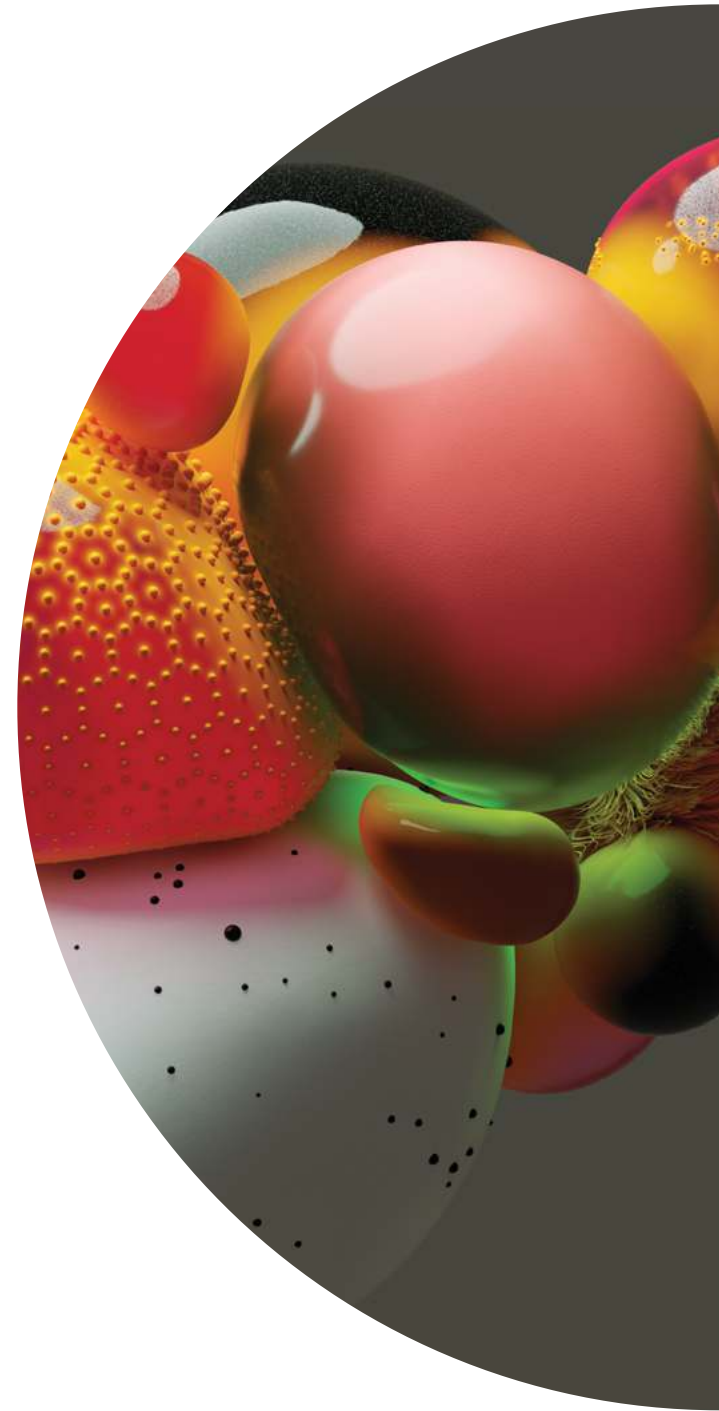
Our state-of-the-art creative pen technology. 8,192 levels of pressure sensitivity and unparalleled tilt recognition means that every stroke, every move of your hand is followed with unerring accuracy.

#### Key features

- Includes Wacom Pro Pen 2
- Premium 4K screens, complete with world class color performance of up to 99% Adobe RGB.
- Multi-touch gestures\*, the on-screen keypad, radial menus and the ExpressKey™ Remote offer a more intuitive experience.
- Built-in legs raise your Wacom Cintiq Pro from 5° to 20°
- Transform your Cintiq Pro 24 or 32 into a powerful standalone creative pen computer with the Wacom Cintiq Pro Engine creative PC module.
- The optional Wacom Ergo Stand lets you raise, tilt and rotate your Cintiq Pro to find the most natural position for you.
- Compatible with Mac and Windows.

\*on touch models

## Live. Dare. Create.





## The Cintiq Pro That's Right for You

Model	Wacom Cintiq Pro 24	Wacom Cintiq Pro 32
Model Number	DTK2420 creative pen display & DTH2420 creative pen display touch	DTH3220 - creative pen display touch
Display Size / Resolution	23.6 in (59.94 cm) / 4K: Ultra HD (3840 x 2160)	31.5 in (80 cm) / 4K: Ultra HD (3840 x 2160)
Active Area	20.55 x 11.57 in (522 X 294 mm)	27.44 x 15.43 in (697 x 392 mm)
Size / Weight (without optional stand)	26.65 x 15.5 x 1.9 in (677 x 394 x 47 mm) / 15.43 lbs (7 kg)	33.62 x 19.92 x 2.1 in (854 x 506 x 53.25 mm) / 28.66 lbs (13 kg)
Color Performance	1.07 billion colors (10 bit), 99% Adobe RGB coverage (CIE1931)	1.07 billion colors (10 bit), 98% Adobe RGB coverage (CIE1931)
Aspect Ratio / Brightness	16:9 / 350 cd/m <sup>2</sup>	16:9 / 310 cd/m <sup>2</sup>
Contrast Ratio / Response Rate	1000:1 / 12 ms	1000:1 / 8 ms
Viewing Angle	Range up to 88° from vertical (2° from horizontal, up to 90°)	Range up to 64° from vertical (26° from horizontal, up to 90°)
Industry Standard Pre-sets	6500° K whitepoint default	
Connectivity	4 x USB3 ports*, 1 x USB C port, 1 x USB3 port (Upstream port connected to computer), 1 x HDMI 2.0 port, 1 x DisplayPort, 1 x USB-A Port (For ExpressKey Remote dongle), audio headset jack, built-in microphone	
Graphics Input	USB type C port (supporting DisplayPort Alternate Mode) or DisplayPort or HDMI 2.0 port (required for 3840 x 2160 resolution)	
Multi-Touch	Pan, zoom and rotate gestures available in most applications including Adobe® Photoshop® and Illustrator®. Available on Touch models only (DTH-2420 & DTH3220)	
Pen	Battery-free Pro Pen 2 with 2 customizable side switches and 8192 pressure levels in both pen tip and eraser (patented electromagnetic resonance method)	
Pen Tilt Recognition / Range	±60 levels / 60 degrees	
ExpressKey™ Remote / Productivity Boosters	17 customizable, application-specific ExpressKeys, Touch Ring, Rocker Ring/Home Button, Precision Mode, Display Toggle, Radial Menu and dedicated pan, scroll, zoom, brush size, time-saving on-screen settings, on-screen keypad and radial menu	
Security	Kensington® Lock Port (lock purchased separately)	
Ergonomics	Built-in stand (5° w/o legs or 20°w/ legs). Optional Wacom Ergo stand with rotation, Wacom Flex Arm and Wacom Cintiq Pro VESA Mount	
Compatibility / System Requirements	PC: Windows® 7 or later (latest service pack/build), Mac: OS X® 10.11 or later (latest update); USB-C port with DisplayPort Alternate Mode (UHD), or Mini DisplayPort/DisplayPort (UHD) and USB-A, or HDMI 2.0 (UHD) and USB-A; Internet access for driver download.	
What's Included	Wacom Cintiq Pro 24 or 32, Wacom Pro Pen 2 with 4-color pen ring set, ExpressKey™ Remote (with USB-A RF dongle and 30cm micro-USB to USB charger cable), Pen stand with 10 replacement nibs (6 standard, 4 felt) and nib removal tool, Pen holder, 180W AC adapter and 1.8m power cable, 1.8m USB-C to USB-C cable, 3m DisplayPort to DisplayPort cable, 3m HDMI2.0 to HDMI2.0 cable, 3m standard USB-A to USB-A cable, DisplayPort to Mini DisplayPort adapter, Quick Start Guide, Regulation sheet, cleaning cloth	
Additional Accessories	Stands: Wacom Ergo Stand, Wacom Flex Arm, Wacom Cintiq Pro VESA Mount; Wacom Cintiq Pro Engine (see details below), Wacom Color Manager, Wacom Pro Pen 3D, Wacom Keyboard, Replacement Wacom nibs (standard and flex) for Wacom Pro Pen 2, Additional previous generation pens (Classic, Airbrush, Art, Pro Pen), Replacement ExpressKey Remote, Replacement Wacom Pro Pen 2	
Limited Warranty	2 years in USA, Canada, and Latin America	

Specification numbers like display size, active area and weight are approximate and subject to change. \*When connected to host computer over USB-C (including Wacom Cintiq Pro Engine), Cintiq Pro USB 3.0 ports run at USB 2.0 speeds to accommodate 4K input video bandwidth over USB-C.

Wacom Cintiq Pro Engine	Xeon model	i5 model
Model Number	DPMW1000H	DPMW1000L
Processor	Intel® Xeon® E3-1505M V6 (up to 4 GHz)	Intel® Core™ i5-7300HQ (up to 3.5 GHz)
Graphics Card	NVIDIA® Quadro® P3200 6GB GDDR5 RAM	NVIDIA® Quadro® P3200 6GB GDDR5 RAM
RAM / Expandable Memory	2 x 16 GB DDR-2400 / Memory at maximum (32 GB)	1 x 16 GB DDR-2400 / Expandable to 32 GB (max)
Storage / Expandable Storage	512GB SSD PCIe Gen3 (M.2 2280) / Upgradeable using any PCIe SSD in sizes M.2 2280 and M.2 22110	256GB SSD PCIe Gen3 (M.2 2280) / Upgradeable using any PCIe SSD in sizes M.2 2280 and M.2 22110
Operating System	Windows 10 Pro for Workstations	Windows 10 Pro
Size / Weight	8.54 x 17.51 x 1.16 in (217 x 445 x 29.5 mm) / 4.4 lbs (2 kg)	
Video Out / Other Connections	1x Mini DisplayPort (DP1.2, 4K 60Hz), 1x Mini HDMI (HDMI2.0, 4K 60Hz) / 1x LAN port(Gigabit), 1x DC Jack (for Wacom Cintiq Pro Engine, round shape), 1x DC Jack (for Wacom Cintiq Pro, rectangle shape), 1x DC Jack (for Wacom Cintiq Pro docking)	
What's Included	Wacom Cintiq Pro Engine - Xeon or i5 model, AC power adapter, AC power cord, L-shaped screw driver, 2x screws to secure to Wacom Cintiq Pro 24/32, Quick Start Guide (QSG), Regulation Sheet. Internet access required to upgrade drivers.	
Limited Warranty	1 year in USA, Canada, and Latin America	